

		Desktop Printers		
		Intermec PC23d (DT)	Zebra HC100 (DT)	Zebra LP 2824 (DT)
Description	Light duty labeling applications (typically less than 2 rolls or 1,000 labels per day) Direct Thermal printing			
Target Applications	Ideal for Healthcare (patient tracking, prescription pad and unit dosage labeling, specimen labeling) and other small format labeling			
Resolution	8 dots/mm (203 dpi), 12 dots/mm (300 dpi)	12 dots/mm (300 dpi)	8 dots/mm (203 dpi)	
Memory	128 MB Flash, 128 MB SDRAM	8 MB Flash, 16 MB SDRAM	512 KB Flash, 128 KB SRAM Optional: 1 MB FLash, 256 KB SRAM	
Max. Print Speed	8 ips (203 mm/sec) – Fastest in its class	2 ips (51 mm/s)	4 ips (102 mm/s)	
Differentiators	<p>Intuitive: Only printer to communicate status with color LCD in 10 languages or icons, Fastest throughput in its class, Most placement options including wall mount</p> <p>Flexible: Only printer with user installable upgrades for network connectivity options</p> <p>Smart: Only printer in its class that's programmable, able to connect keyboard, scale</p>			
Intuitive	User Interface	VGA LCD in 10 languages or graphic icons	LEDs	LEDs
	Upgrades	Upgrade without computer using USB Flash Drive	Must use computer	Must use computer
	Media Handling	Simple, intuitive loading for a wide variety of media. One Handed loading!	Single source cartridge, Drop In, wristbands only	Media guide adjustment necessary
Flexible	Communications	Standard: 1 USB-A host (+ 1 for LCD model) USB-B device v.2.0 Optional: USB-to-Serial Adapter, USB-to-Parallel Adapter, Ethernet, 802.11 b/g/n WiFi / Bluetooth	Standard: Serial RS-232, USB 2.0, Optional: Ethernet, 802.11 b/g WiFi	Standard: Serial RS-232, USB 1.1, Parallel Optional: External ZebraNet 10/100 Printer Server
	Footprint H x W x D	Highly Compact Size – one of the smallest footprints for a 2" direct thermal printer, wall mountable	Highly Compact Size – one of the smallest footprints for a 2" direct thermal printer	Compact
	Printer Language	DP, FP, IPL, ESIm (EPL), ZSim (ZPL), DSIm (DPL) on board. Autoconfiguration of printer language	XML, ZPL, ZPL I/ZPL II, ZPL II	EPL2, Line Mode
	Accessories	User Installable: USB-to-Serial Adapter, USB-to-Parallel Adapter, Ethernet, 802.11 b/g/n WiFi / Bluetooth, Label Dispenser, Case Lock Factory Installed: HF RFID	Factory Installed: Ethernet, 802.11 b/g WiFi	User Installable: Keyboard Display Unit, Narrow Media Adapter Factory Installed: Cutter, Dispenser, Liner-free platen, RTC
	Remote Status	SmartSystems® Device Management	Not available	Not available
Smart	Programmable	The only desktop printer with fully programmable capabilities for application and labelling efficiencies + add keyboard or scanner direct – no PC required.	Not programmable	Limited programmability with Keyboard Display Unit
	Printhead Replacement	Buy Intermec printers and media and get free printheads for life.	No formal program	No formal program
Better Together	Total Hardware Solution	Part of a complete Intermec AIDC Solution: Printer, Scanner, Mobile Computer, Software, Media, and Service	Incomplete solution	Incomplete solution

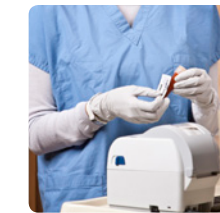
Vertical Markets and Applications

Desktop Customer: T&L/Courier



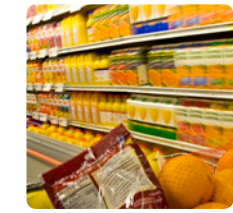
Ideal for printing shipping labels at customer and retail sites

Desktop Customer: Healthcare



Ideal for patient wristbands, pharmacy unit dose and laboratory specimen collection labeling, as well as prescription printing

Desktop Customer: Retail



Ideal for shelf labels and in-store prepared food labeling

Desktop Customer: Manufacturing



Ideal for shipping labels as well as finished goods and WIP labeling

Desktop Customer: Government SMB Office



Ideal for shipping labels as well as asset and record labeling

New PC23 & PC43 Desktop Printers – Super Easy to Install and Use

Introducing Intermec's PC23 and PC43 desktop printer line, available in 2" (PC23d) or 4" (PC43d) direct thermal and 4" (PC43t) thermal transfer. Increase uptime with a multi-language LCD or Icon graphics interface that provides status updates. Experience a productivity boost with the fastest throughput in its class and easy media loading. Gain long term confidence and scalability with user installable upgrades. Ideal for package courier, healthcare, small and medium business environments.

Message	Benefit	Feature
INTUITIVE	Easiest to Install & Use	<ul style="list-style-type: none"> Multi-language LCD or universal icon user interface provide status updates (NEW) Half-inch or one-inch ribbon core flexibility enables maximum time between roll changes (NEW) One hand media loading and reloading (NEW) Fastest throughput in its class (NEW)
FLEXIBLE	Fits your business today & tomorrow	<ul style="list-style-type: none"> Only printer with user installable accessories and network connectivity options (NEW) All leading command languages standard on every printer
SMART	Keeps you informed & productive	<ul style="list-style-type: none"> Remote status and updates (NEW) Ability to add standard devices such as a keyboard or scale (NEW) Programmable, enabling customized applications that simplify labeling processes & eliminate hardware (NEW)